

# AL DIRIYAH CONCERTS

## Case Study

Formula E , Calvin Harris + more  
November/December 2019  
Riyadh, Saudi Arabia

A build overview and technical  
information guide.







AES are always proud of providing staging and structures for all the music events we work on. However, we are particularly fond of our team's work at the Riyadh venue, where we delivered a full temporary structure turn-key solution.

AES provided all structures for the previous year's 2018 inaugural race event and the brief from the client for the 2019 show was simple..... we are going to go bigger and better!

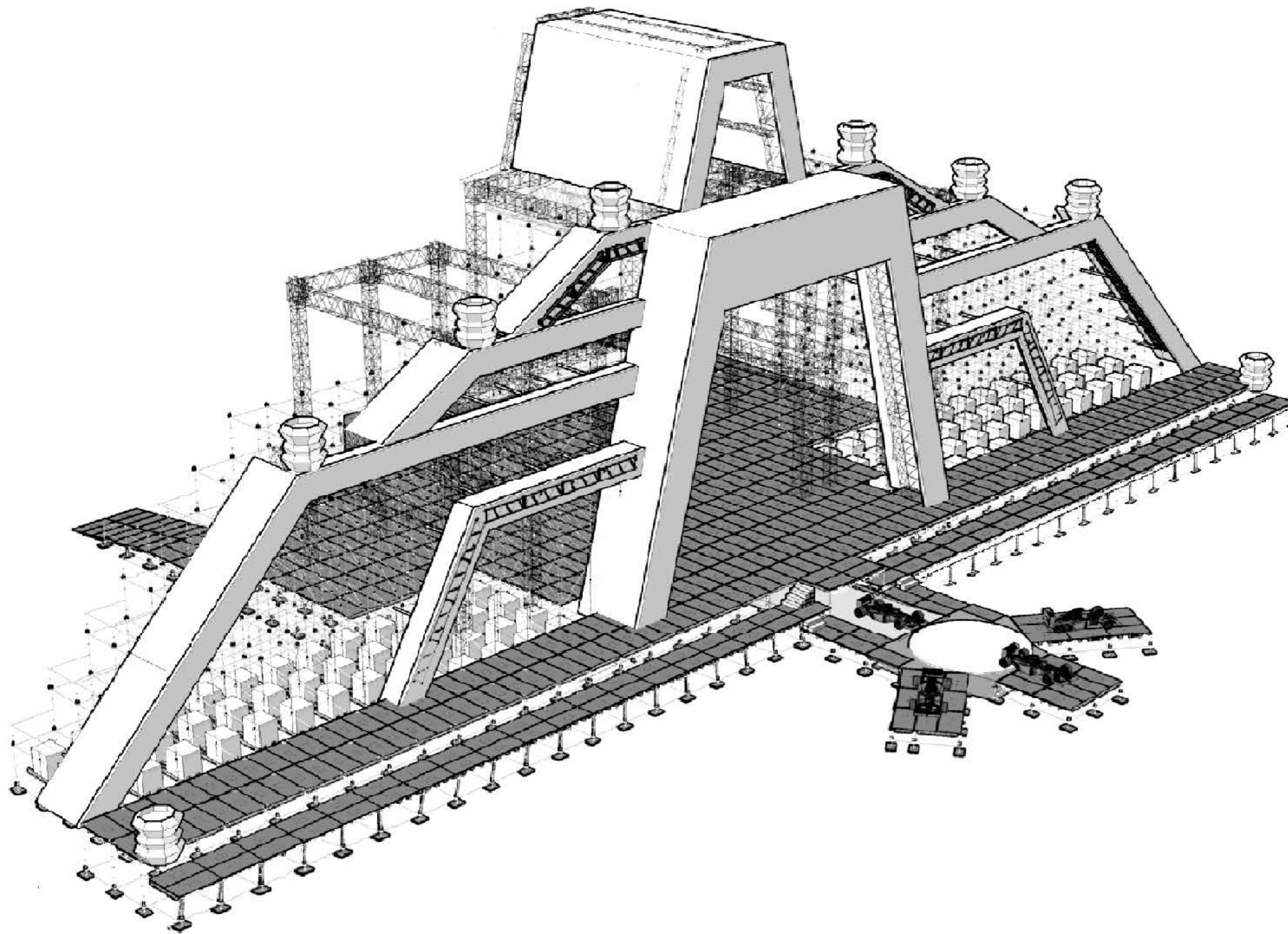
Live Nation Middle East, required a concert setup to host multiple shows, which took place over four weekends.

Starting with the Formula E race on 22nd & 23rd November where race fans watched the race finalists on stage for the podium finish, before the race concerts offered performances by Imagine Dragons, Clean Bandit and Maluma.

Other A-list performers featured on stage over the four weeks included Usher, Marshmello, Pitbull, Shaggy, Lil Wayne, Future, Akon and to the final performance on 14 December headlined by Calvin Harris.

AES's work for this event included the music stage, two tiered VIP platforms, split FOHs, delay towers and much more.





## THE STAGE

PERFORMANCE AREA (HOUSE)

**18m x 18m**

ROOF RIGGING HEIGHT

**18m**

US EDGE TO DS EDGE

**28m**

SCAFF WINGS TIP TO TIP

**62m**

CROWN TOP HEIGHT

**29m**

UNDER STAGE TUNNEL/RAMP

**34m**

BALLAST REQUIRED

**167 tonnes**

A design born from the concept of an eagle/bird of prey rising up from the earth, the Diriyah Music festival stage was a unique structure that was designed and built using the material from a combination of AES products.

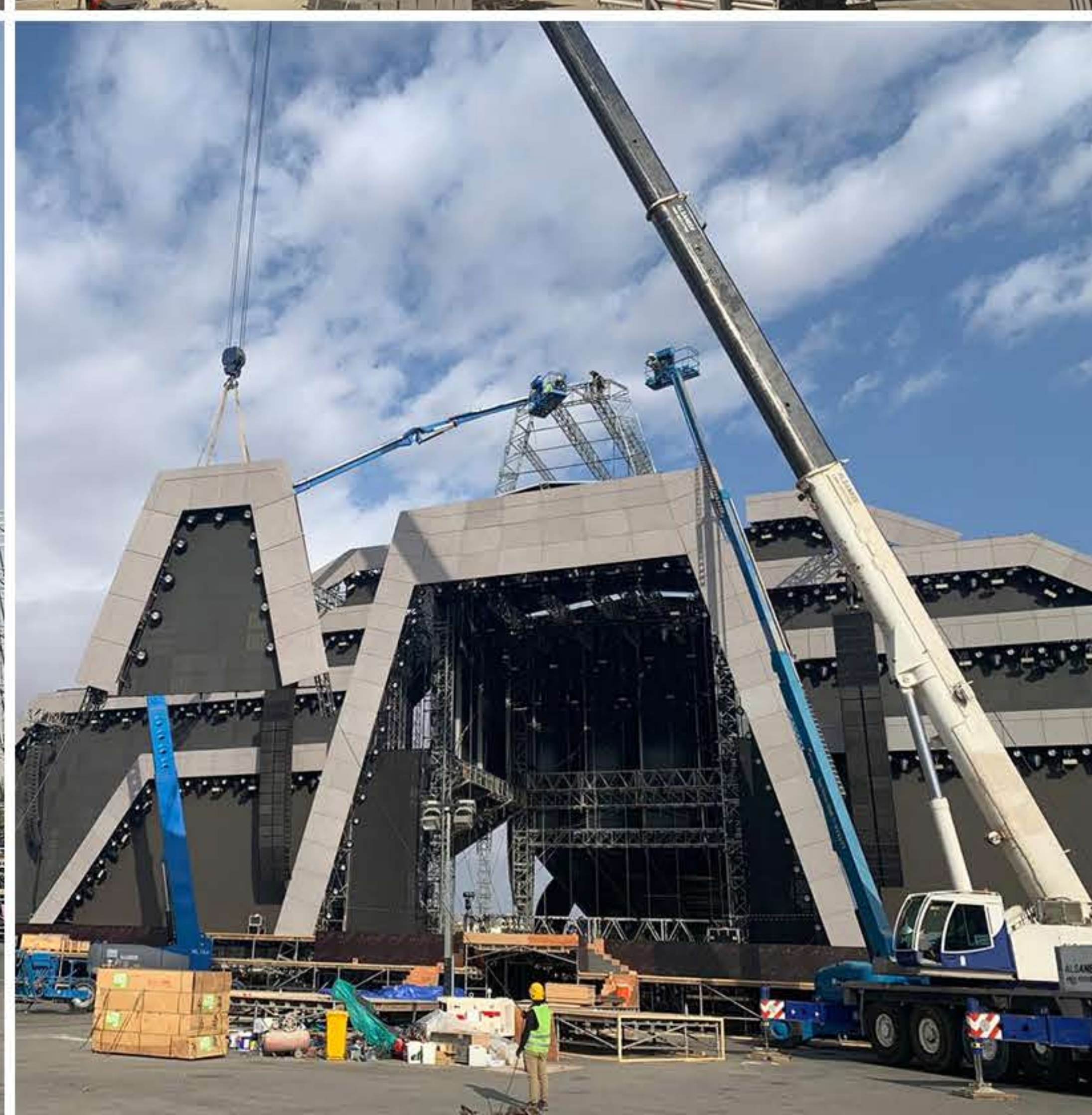
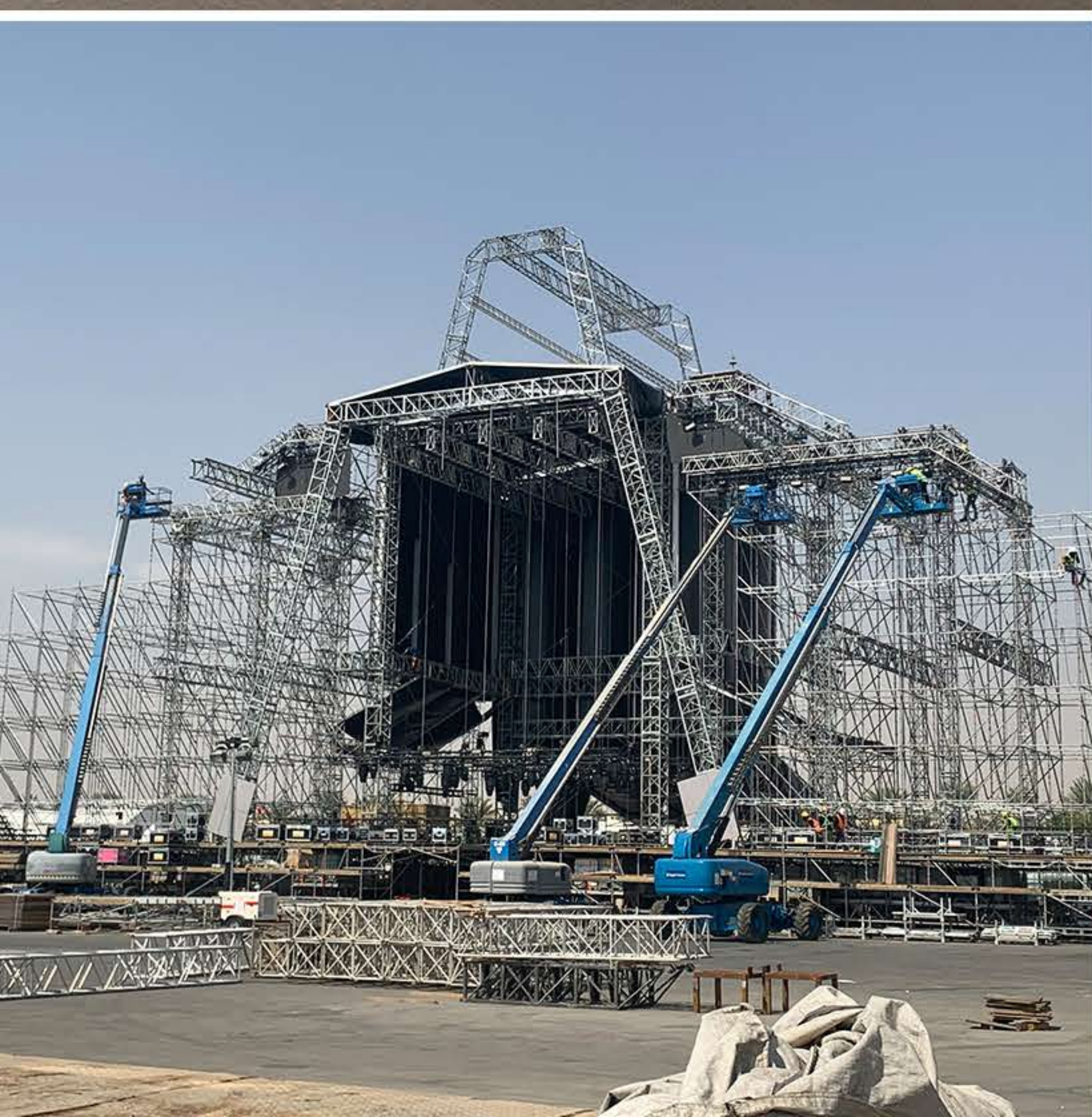
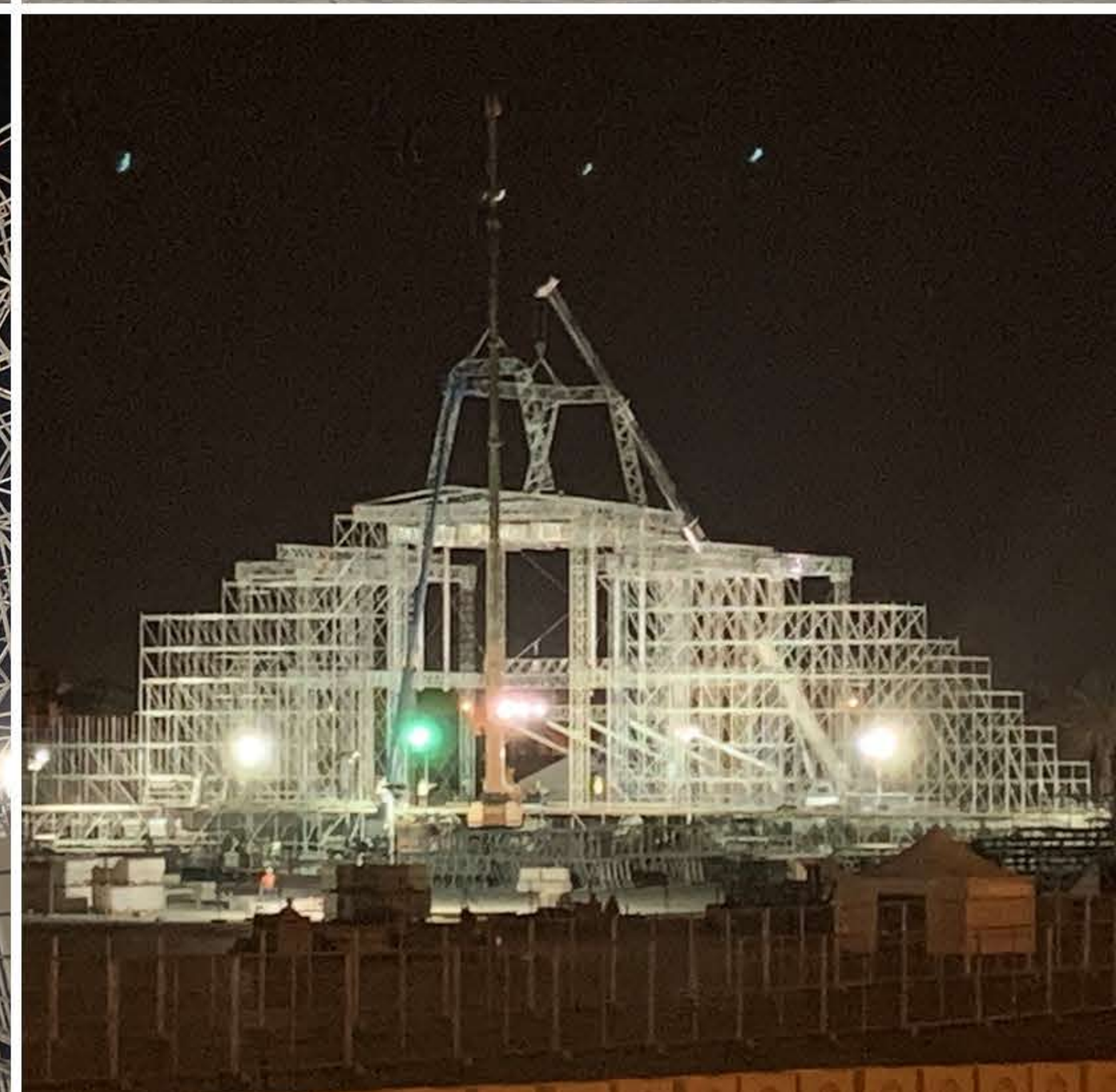
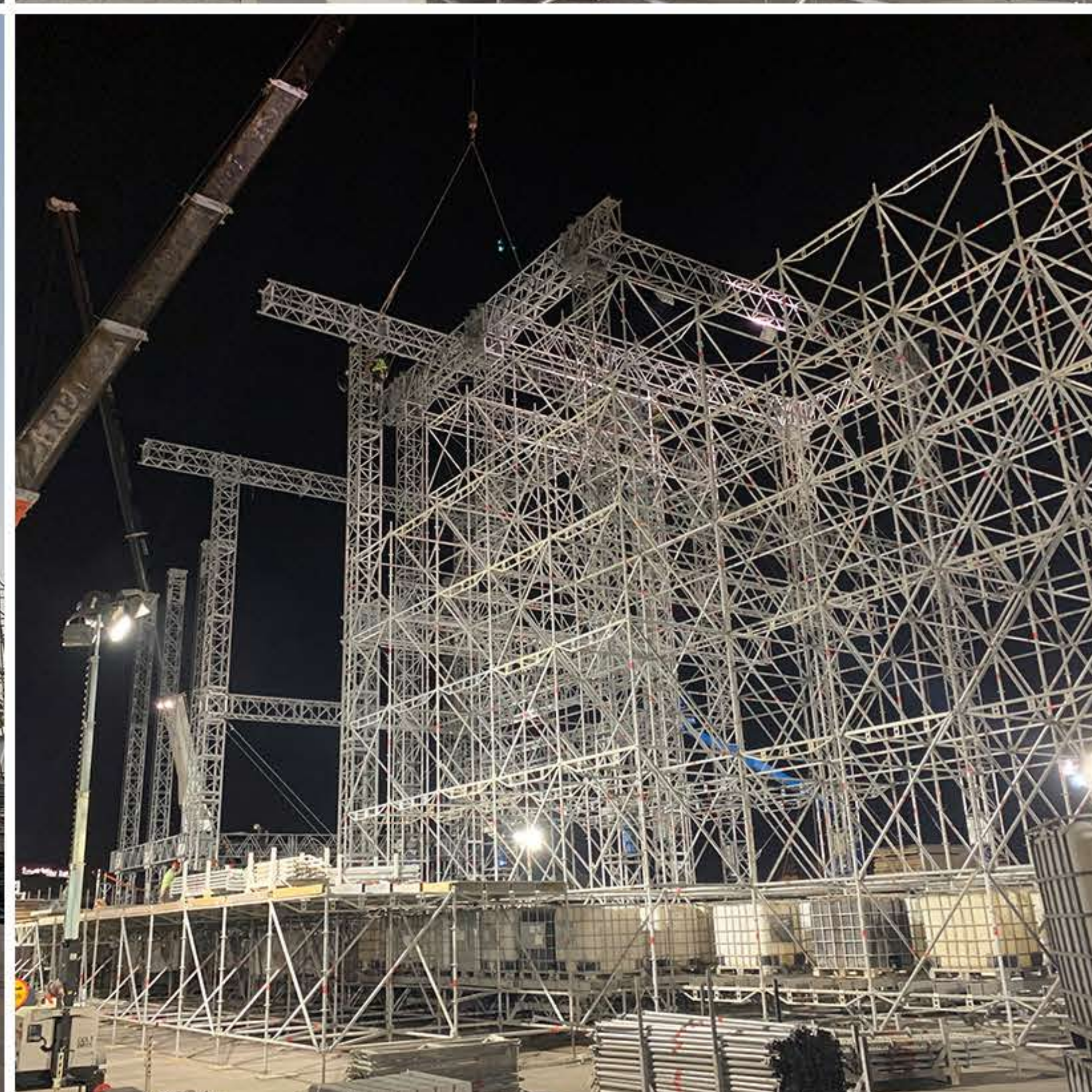
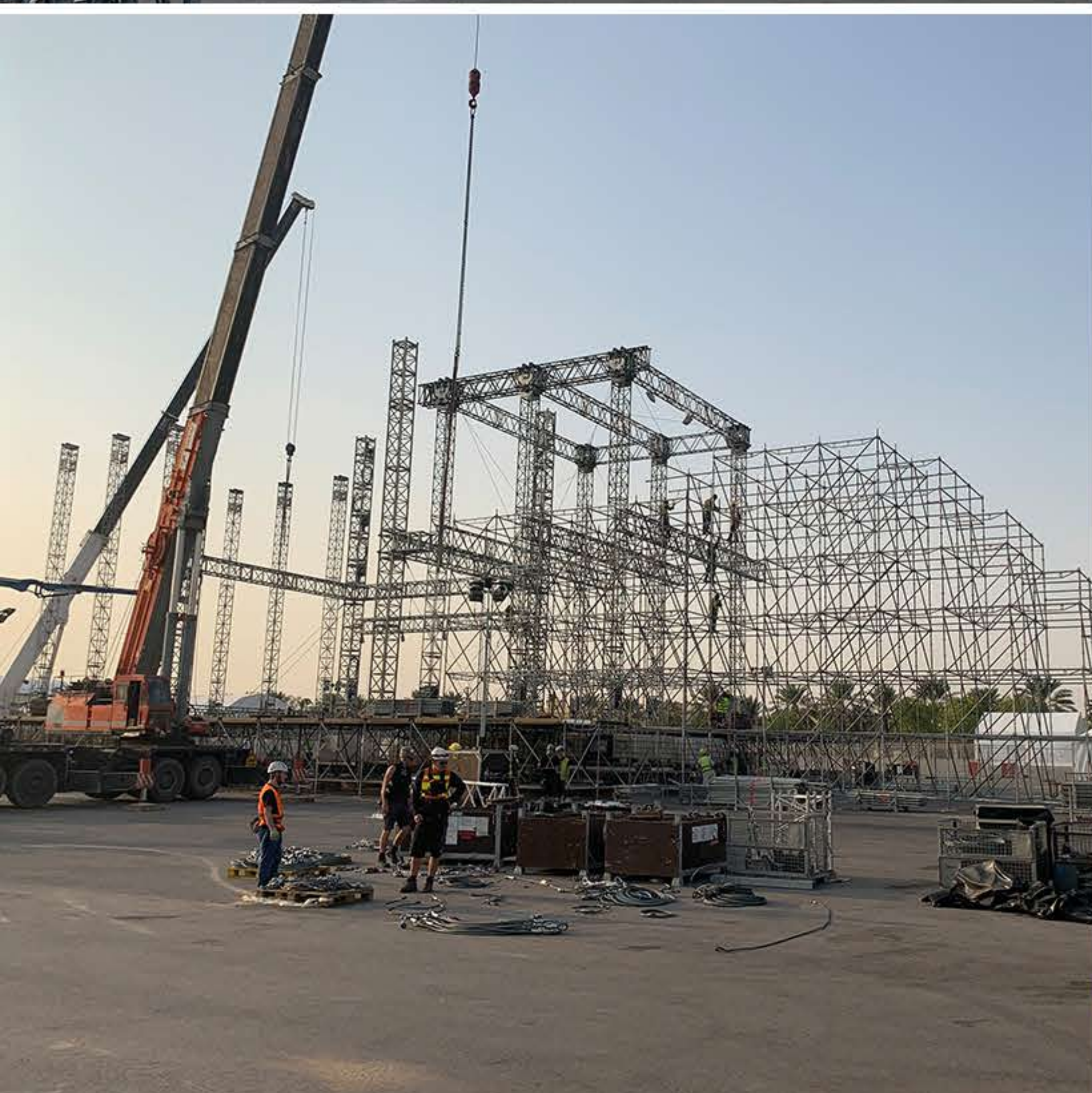
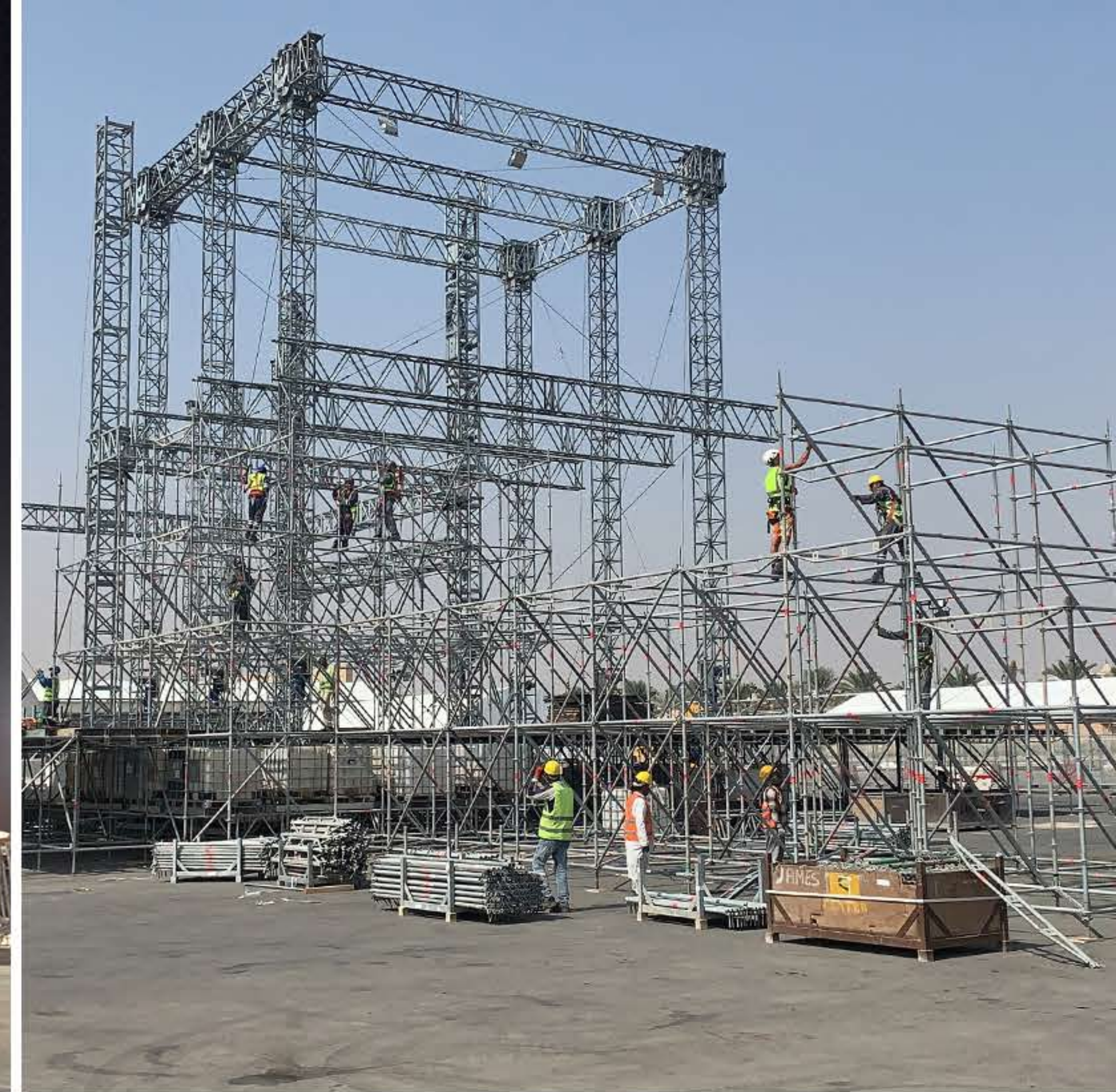
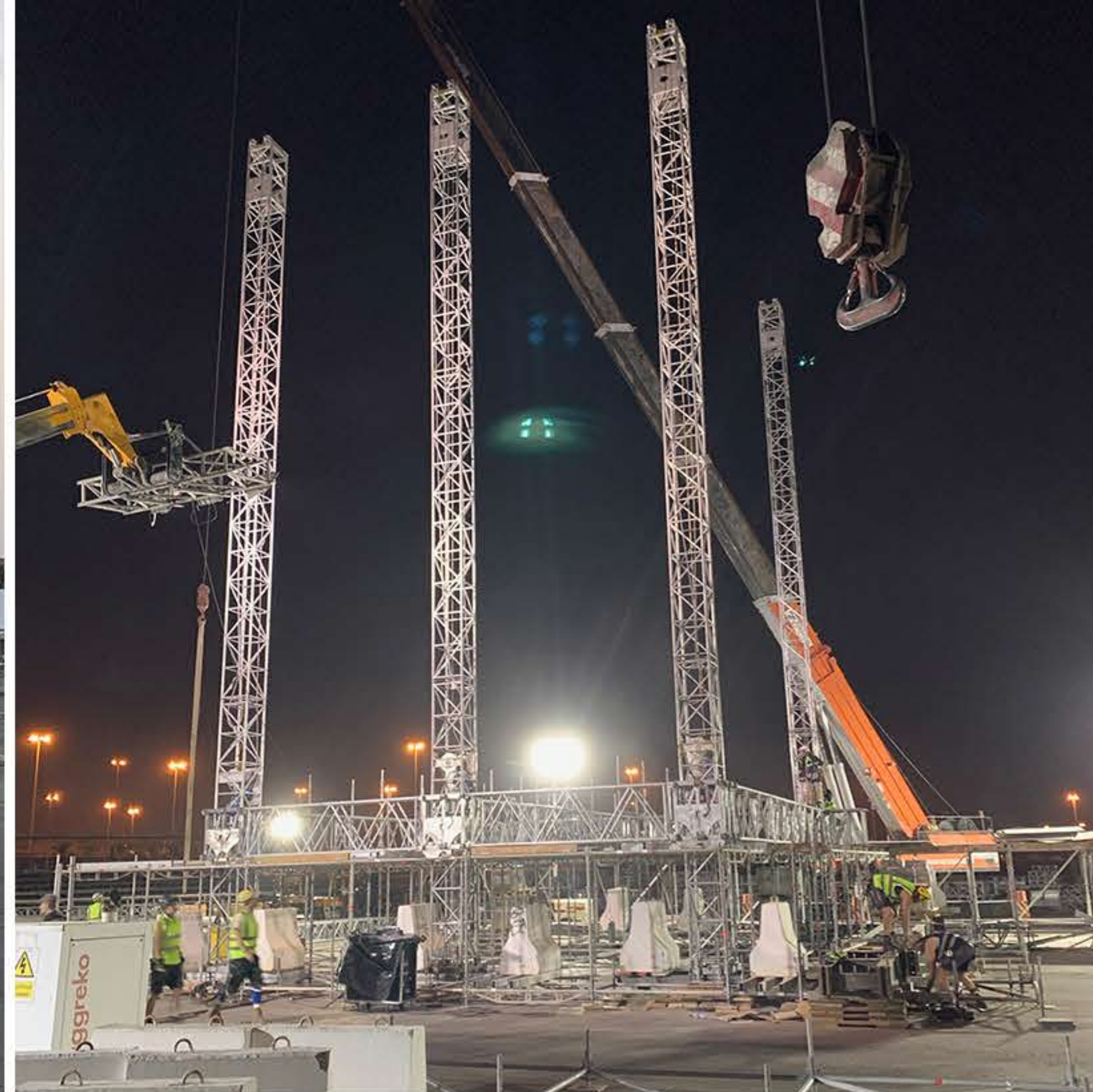
The central house section of the stage is constructed with steel towers and truss, at 20m clearance height and clear spanning the 18m x 18m performance area. Above the house we positioned a 9m high angled truss crown that was attached using bespoke connection specials that AES manufactured for this project. Steel towers and truss was also used for the wings to provide support for the main PAs and house underworlds, backlines and pyro pits etc.

To create the tiered pyramid style wing facade, we installed two Layher scaffold walls 6m deep and up to 20m at its highest point, either side of the performance area and in front of the steel truss. On top of the scaffold walls, six pyro platforms were built, which would be located behind the six cauldrons, these would house the pyros and flame throughout performances.

AES attached aluminum truss on the front of the scaff wall, in sloped angled positions, the truss was used for rigging the LED motors and the concrete look fascia fabrication.

The requirement of 560 sq.m of LED screens to hang on the façade and 30T to hang in the roof, was on top of building a tunnel to run underneath the stage to allow the Formula E cars to drive through onto the podium thrust. On which we had installed a 6m turntable to enable the 1st, 2nd and 3rd placed cars position their vehicles for the pedestal photo finale.







## VVIP & VIP

### Stage left & right deck

Each deck consisted of:

1,200 PAX capacity

32m x 25m footprint @ 7m height

650 sq.m - 4-tiered open air decks for sofas / armchairs / bar stool seating and table service

150 sq.m - Covered/air con internal space for seating/catering/service

150 sq.m VVIP balcony at 7m high for sofa and table service

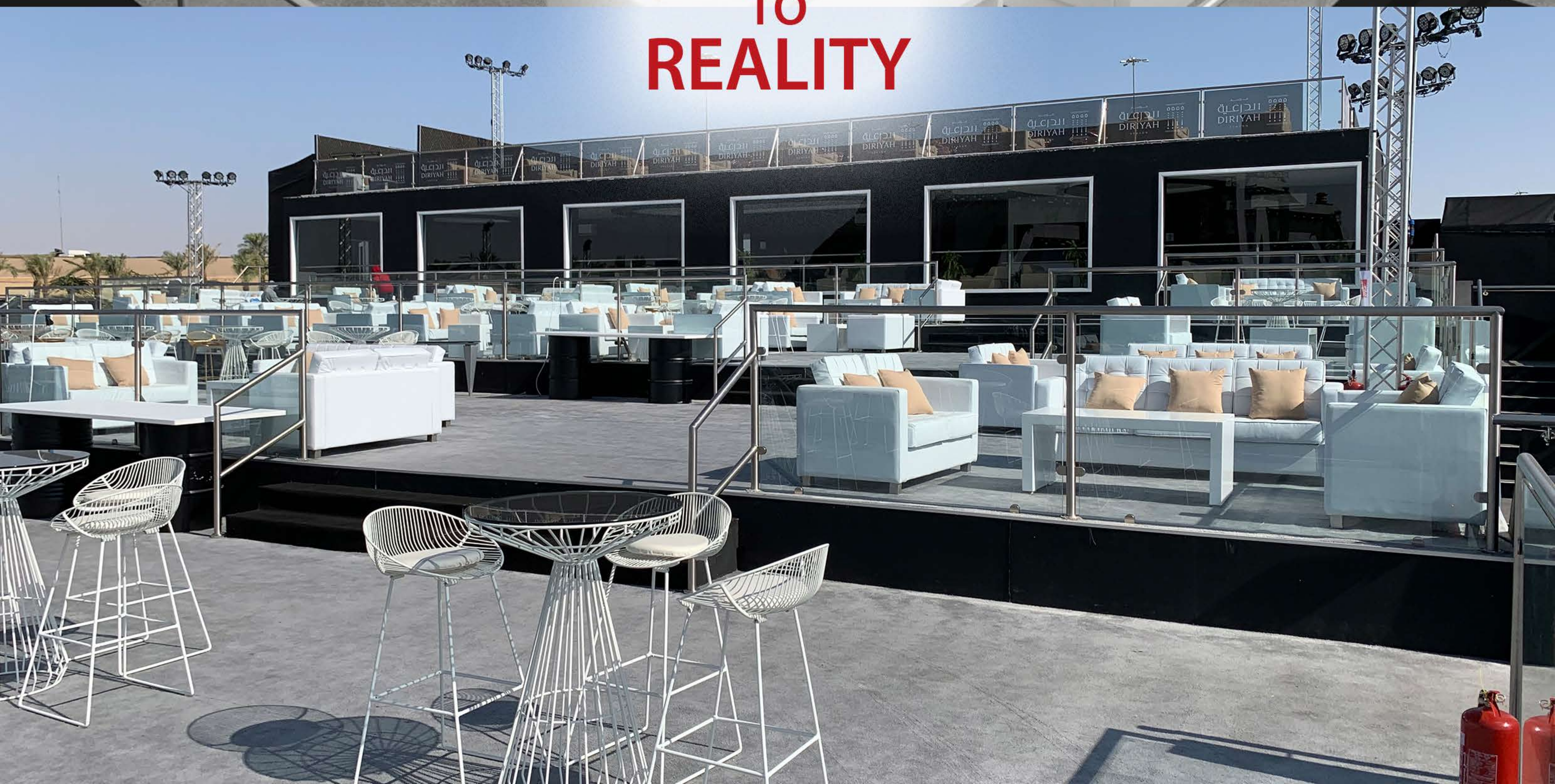
60 sq.m accessible platform







**RENDER  
TO  
REALITY**







**RENDER  
TO  
REALITY**







**Both VIP structures, SL & SR, were built to host up to 2,500 VIP ticket holders.**

The design's other essential requirements were:

Enough sq.m to offer F&B table service to all VIPs

Swift entry & exit access to the VIP deck

Internal A/C space for VVIPs

Access to VIP toilets close by

BOH internal space for catering service inc separate service access

Clear and safe exit points for all ticket holders



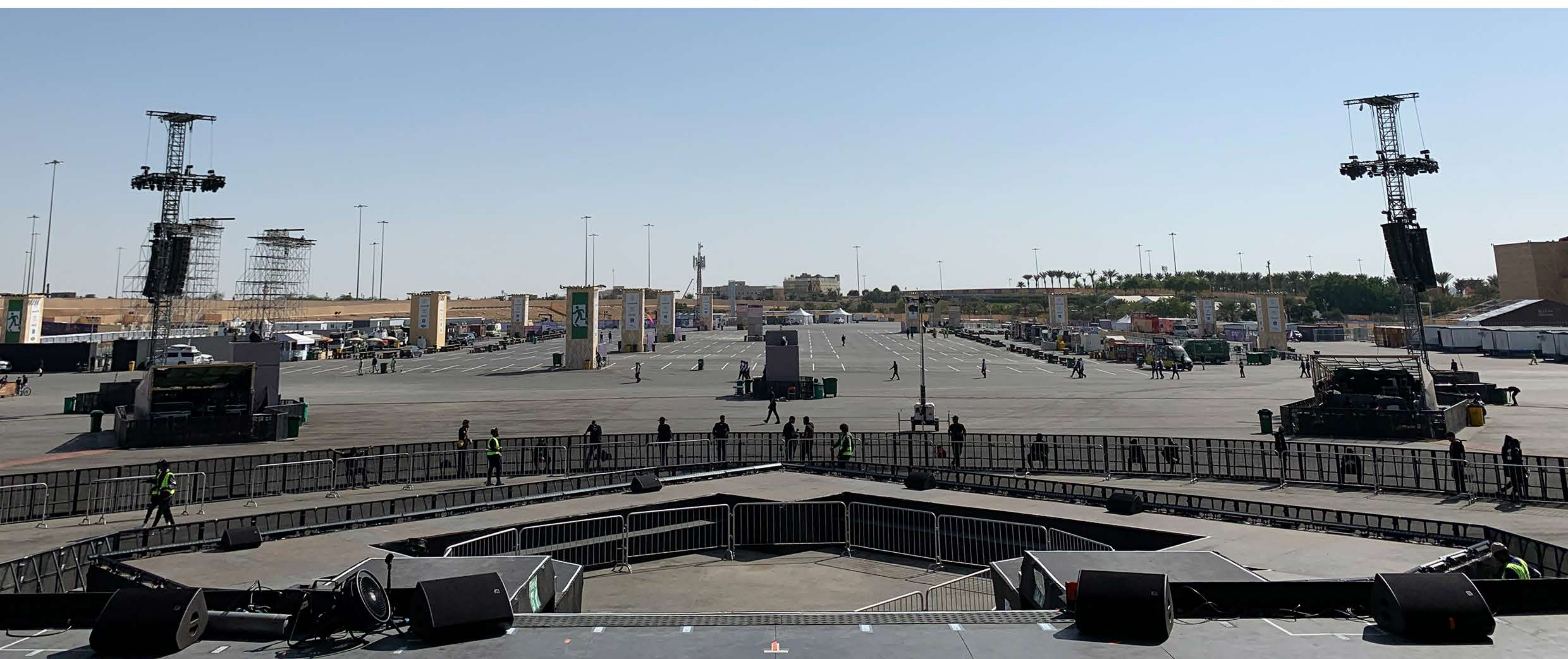
## Delay & Light towers

Doubling as a light platform, our delay tower system covered both needs without additional structures, that may detract from the already precious space available at the Al Diriyah venue.

The freestanding delay towers have high load capacity and can raise speaker arrays higher (18.6m shown in picture) than our other designs.

Delay towers are essential structures used to elevate lights and audio speakers in the air, whilst minimizing the impact on the audience's view.

At the rear, sound boxes or video screens can be attached to these towers when required, in combination with the follow spots.







ALL  
EVENTS  
SERVICES

[www.aes.ae](http://www.aes.ae)    [info@aes.ae](mailto:info@aes.ae)  
(+971) 4 321 5599

Street 18, Al Quoz Industrial Area 1, 333986 P.O BOX  
Dubai, United Arab Emirates