

KISS NYE CONCERT KISS GOODBYE 2020

Atlantis Hotel,
Palm Jumeirah

Case Study

A stage build overview and
technical information guide.



ALL
EVENTS
SERVICES

ATLANTIS HOTEL KISS STAGE BUILT ON THE BEACH



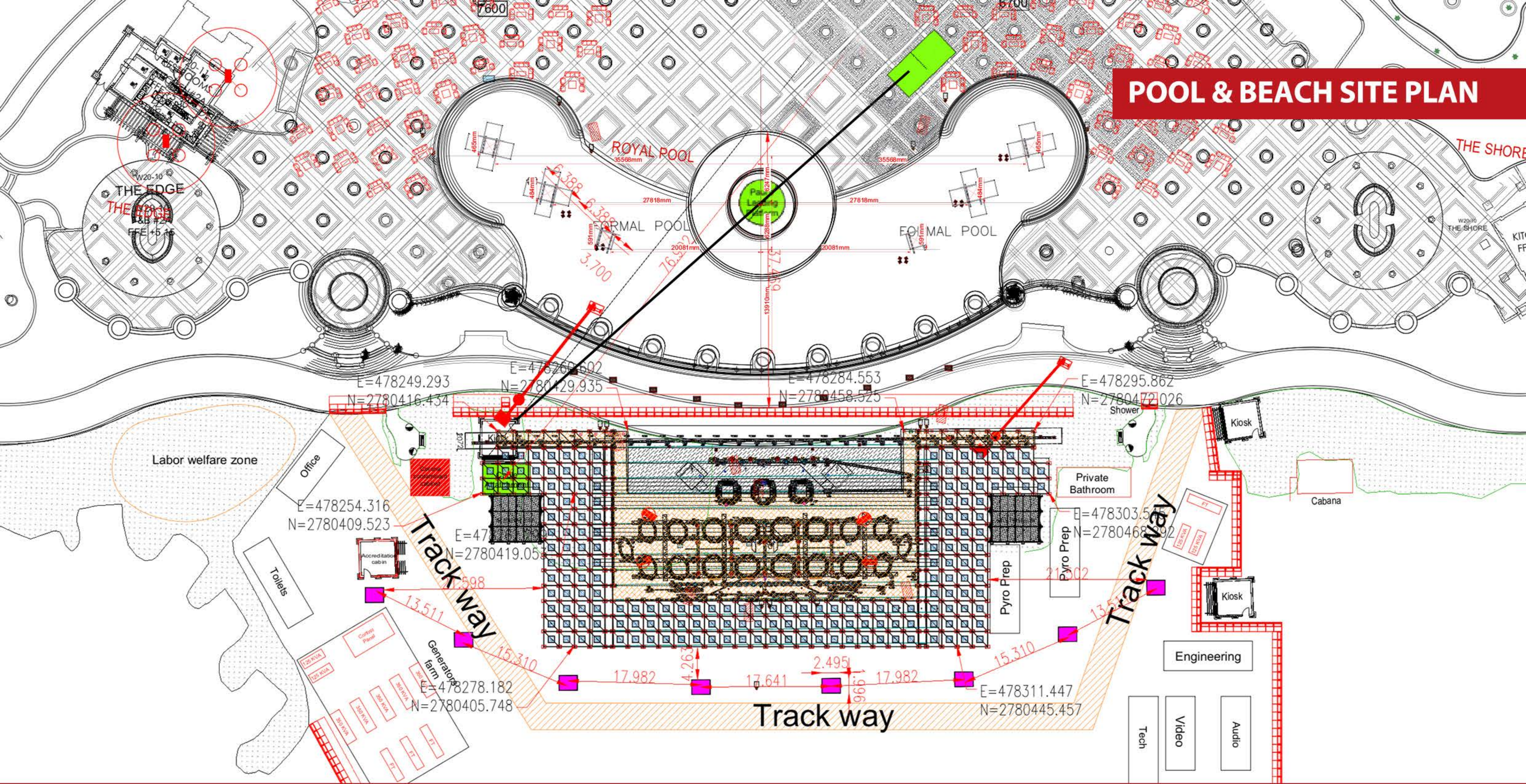
Legendary glam rock band Kiss, rock in the new year by performing a supersized live pay-per-view concert from the Atlantis Dubai. The one off show, was one of the biggest productions the band has played in their 50 year career.

All Events Services designed and built arguably one of the largest entertainment stages the Middle East has ever seen for the spectacular event.

Contracted by CDS to supply a full temporary structure solution for the Kiss 2020 Goodbye NYE show, AES put the thinking caps on for the design of the main stage, where the main brief was... **BIG!**

AES are extremely proud of the work achieved on this event, as the operational process undertaken for this build had many challenges which included building on the beach on a tight site footprint, running a large-scale build under a strict build schedule due to the hotel operating at full capacity and managing all the above in the height of the Covid-19 pandemic.

The event was not ticketed or open to the public, the only concert goers were the hotel guests who watched the performance from their balconies. Taking advantage of the space in front of the stage, Kiss brought in the big guns and filled the Atlantis royal pool with flames and pyrotechnics. AES provided all towers, platforms and even the stage roof to house all the pyro.



AES SUPPLIED A FULL TURNKEY SOLUTION FOR THE CONCERT, TEMPORARY STRUCTURES INSTALLED INCLUDED:



**MAIN
STAGE**



**B
STAGE**



**PYRO
TOWERS**



**ZIPLINE
TOWER**



**CAMERA
PLATFORMS**



**FOH
TOWERS**



**HGV/PLANT
TRACKWAY**

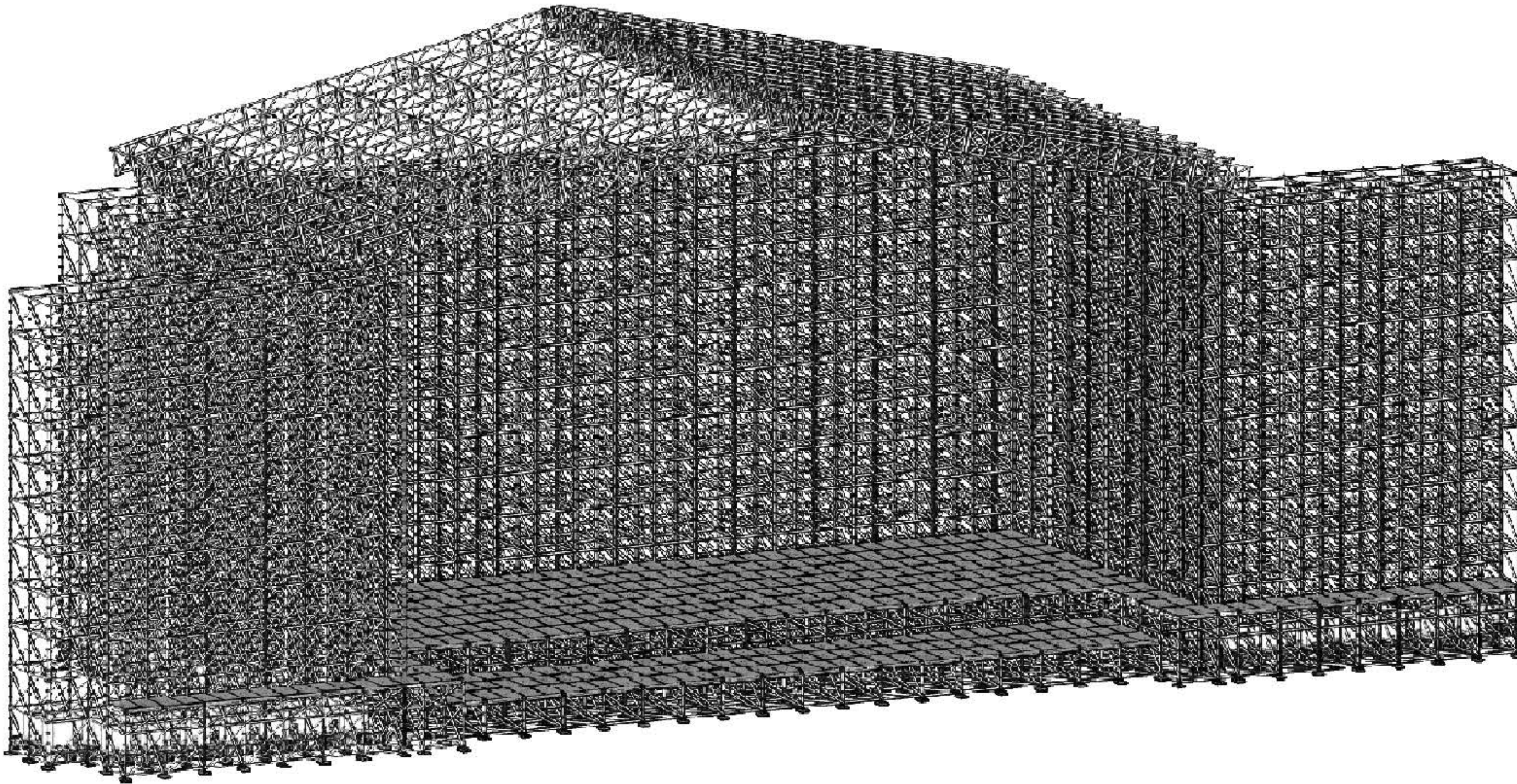


**SITE
FENCING**



**PROJECTION
PLATFORMS**

THE STAGE



STAGE FACTS

32M
ROOF HEIGHT

42M
ROOF CLEAR SPAN

23.5M
ROOF CLEARANCE (FROM DECK)

68 TONNES
ROOF RIGGING CAPACITY

42M X 20M (840 SQ.M)
PERFORMANCE AREA

74M
STAGE WIDTH (INC WINGS)

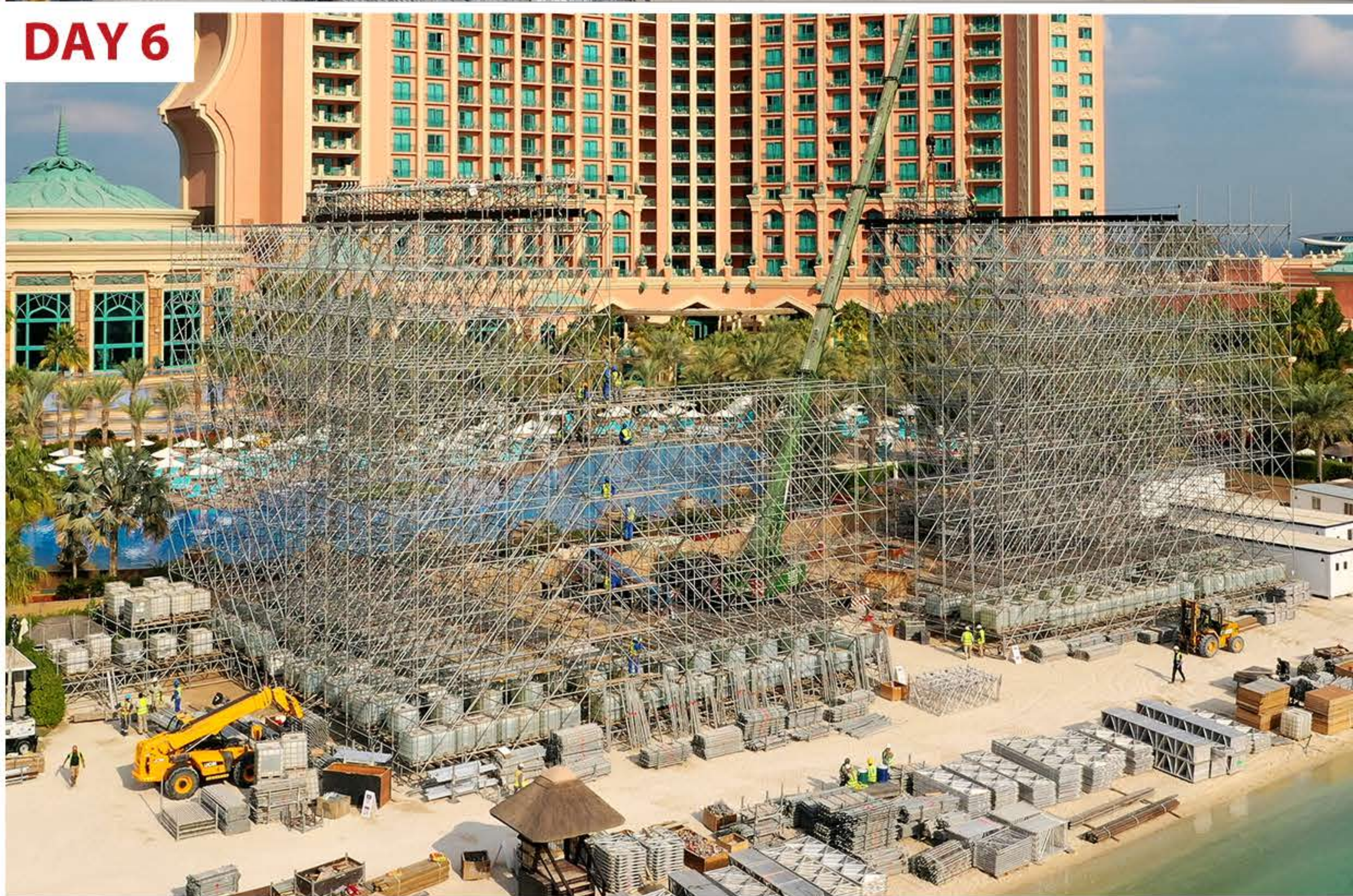
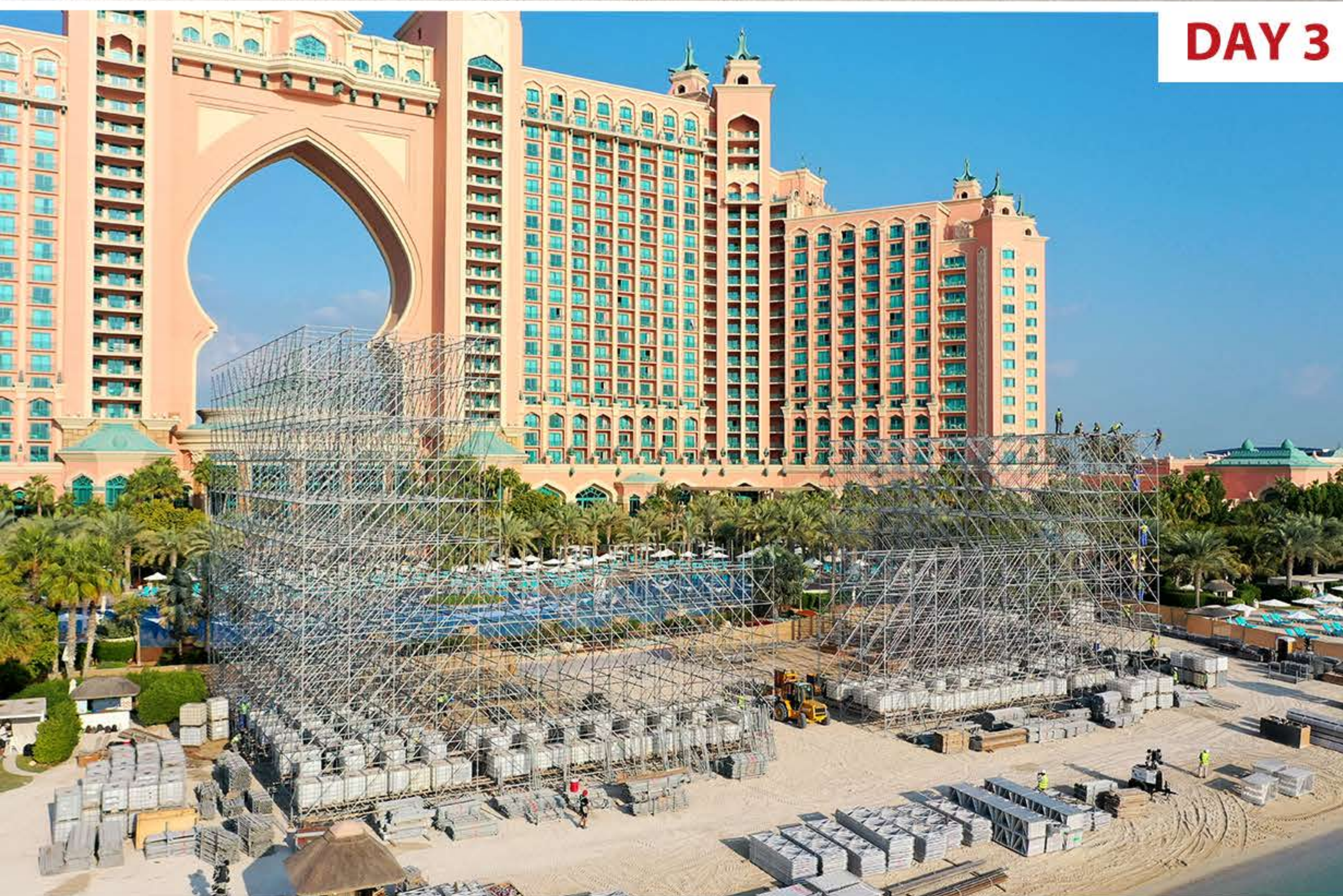
1.5 & 3M
DECK HEIGHT



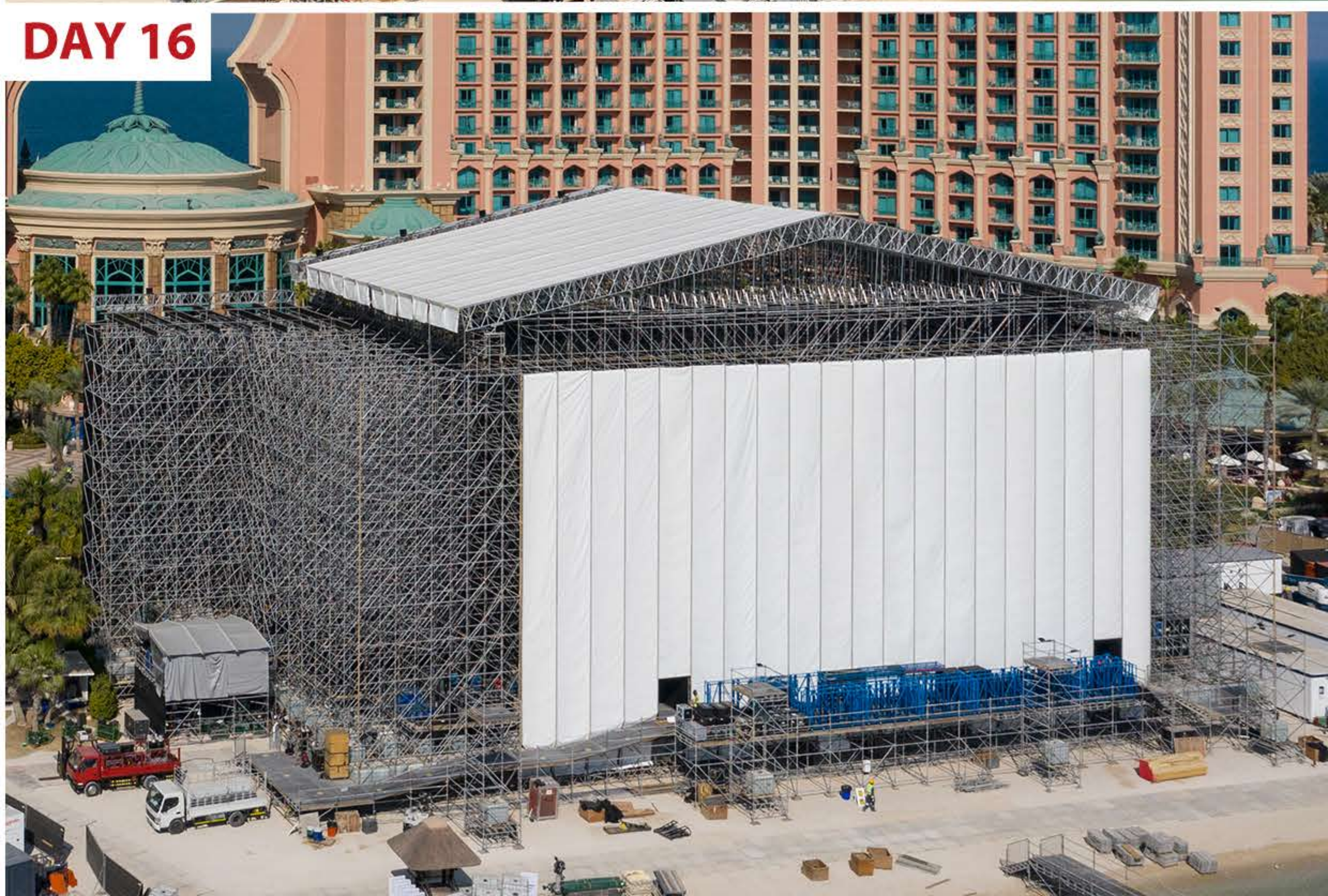
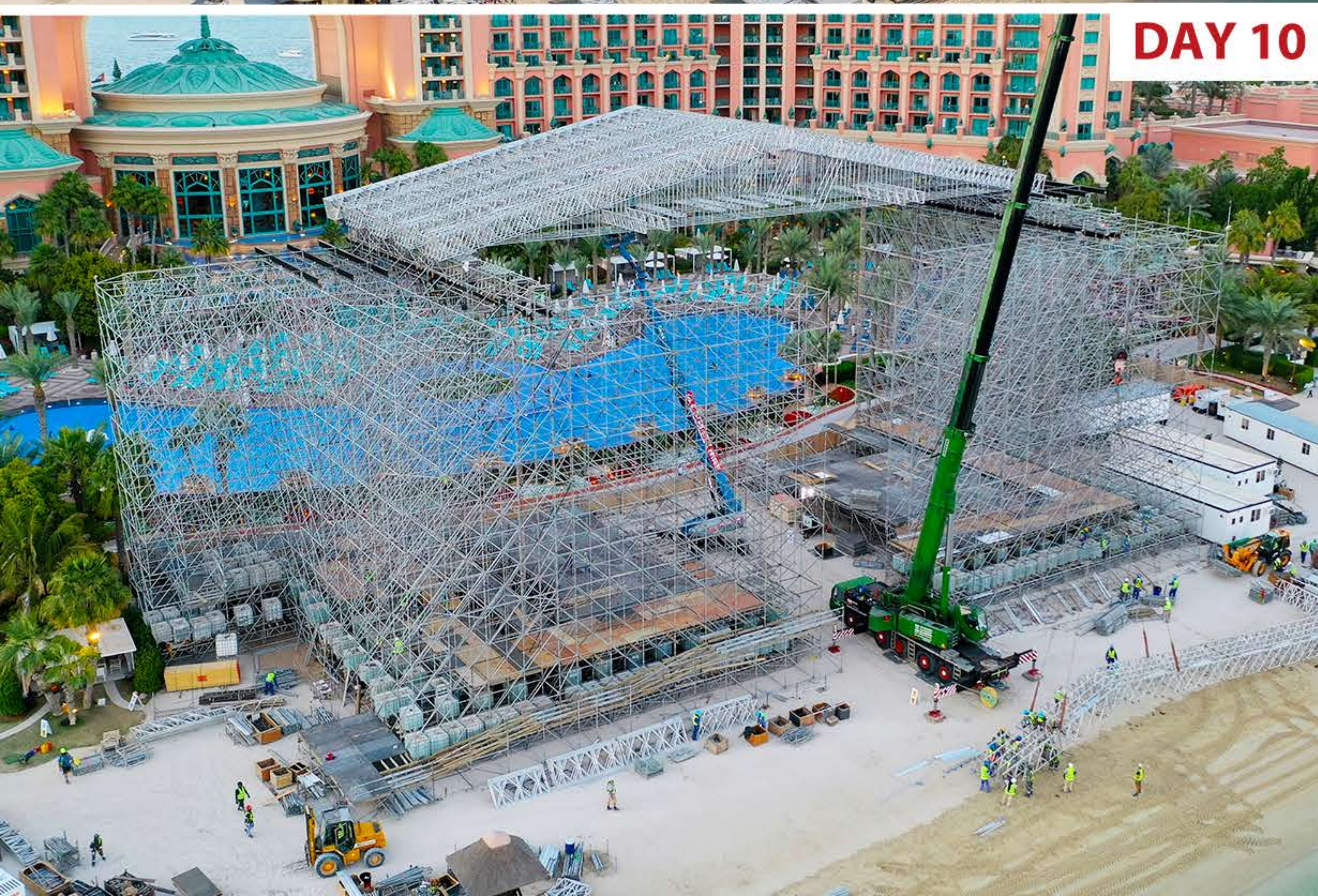
DAY 1 DAY 2



DAY 3 DAY 6



DAY 10 DAY 16



STAGE ROOF SYSTEM

The stage roof was designed and engineered using a lightweight, modular temporary roofing system, utilising multi-purpose aluminium beams.

The beams offer unrivalled strength capability and are compatible with the Layher modular system scaffold used for the stage walls.

High load bearing capacities - 68T rigged in roof

42m clear span

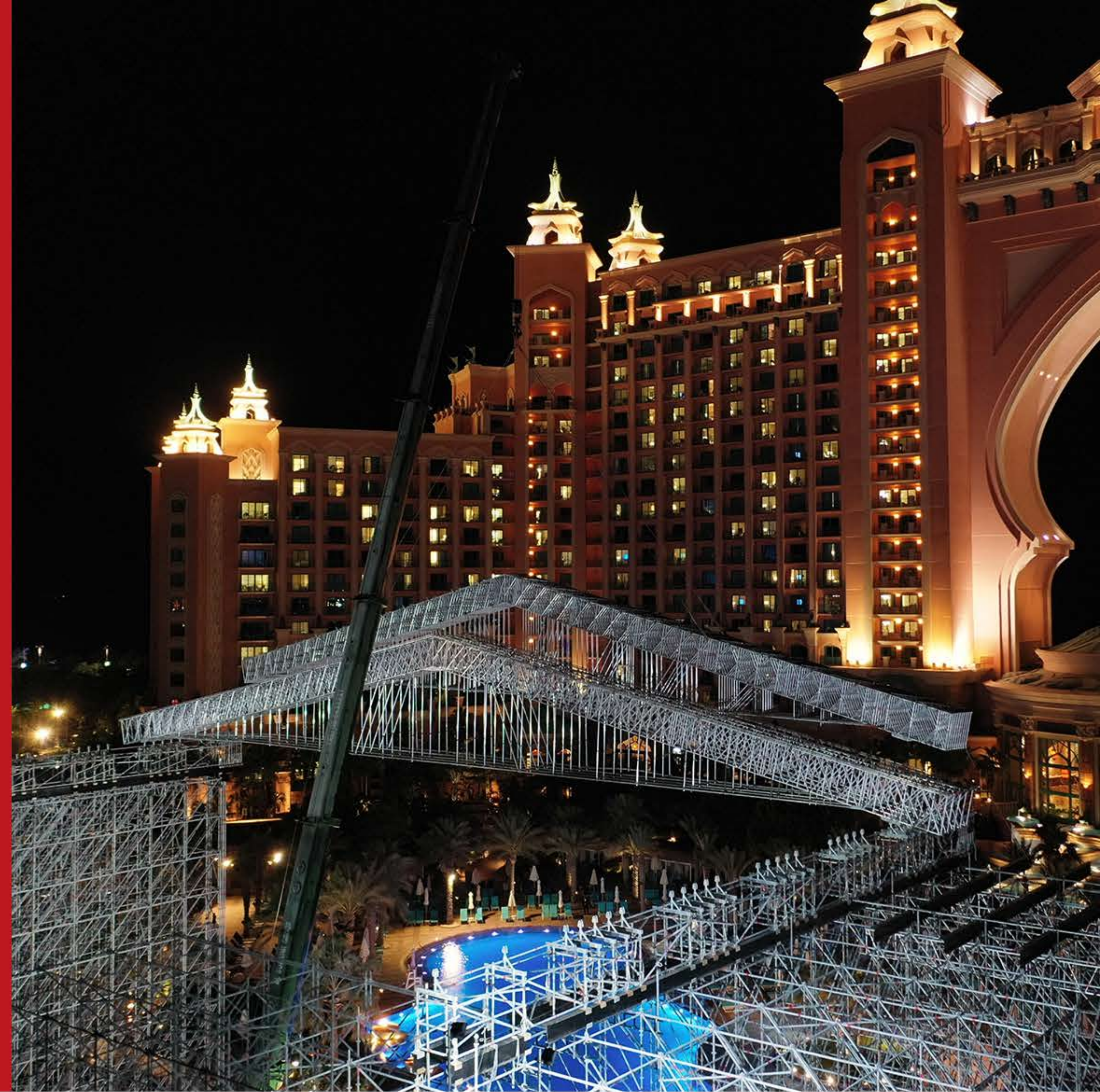
Built using 7 x beam sections

1 x 10 beam bank (downstage)

5 x 5 beam bank (centre)

1 x 2 beam bank (upstage)

18 degree roof ridge pitch





**FLAME RETARDANT ROOF SKINS INSTALL
OFFERING A WEATHER PROOF STAGE COVER**





2 TONNES DRUM RISER



**21 KISS TOUR LED PODS
RIGGED IN STAGE ROOF**



**70M ZIPLINE FROM MAIN
STAGE TO B - STAGE**

**The largest stage Kiss have
ever performed on!**

Kiss brought two tour sets to Dubai for the NYE show.

The usual tour stage set for the band was not enough to fill the large 840sq.m performance area and so they doubled up for this one off spectacular.

The Kiss NYE sets included:

- 2T Drum hydraulic riser
- 21 LED pods rigged to the roof
- 4T B-Stage hydraulic lift
- 70m GAG zipline



Highest flame projection
in a music concert



Most flame projections launched
simultaneously in a music concert



**'It's the biggest pyro show since
Krakatoa' - Gene Simmons**

The iconic rock band's performance broke the world records for highest flame projection in a music concert and for most flame projections launched simultaneously in a music concert.

AES supplied 8 pyro towers on the beach, 6 pyro towers in the hotel pool and multiple pyro units were installed on the stage including 12 on the roof.



ALL
EVENTS
SERVICES

www.aes.ae info@aes.ae
(+971) 4 321 5599

Street 18, Al Quoz Industrial Area 1, 333986 P.O BOX
Dubai, United Arab Emirates